

Puncture Fixtures

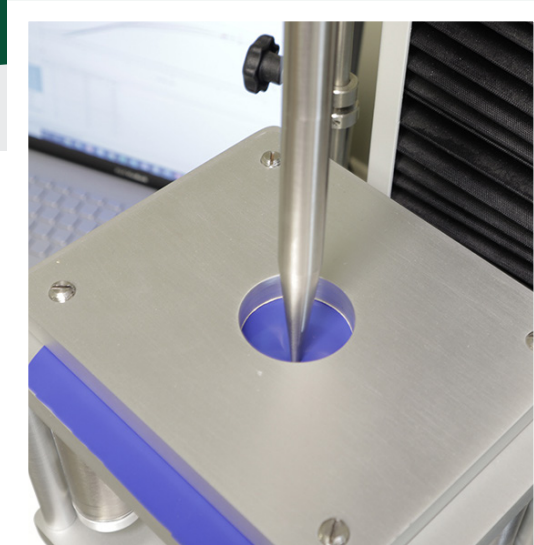
Universal Testing System

Ideal Sample Types:

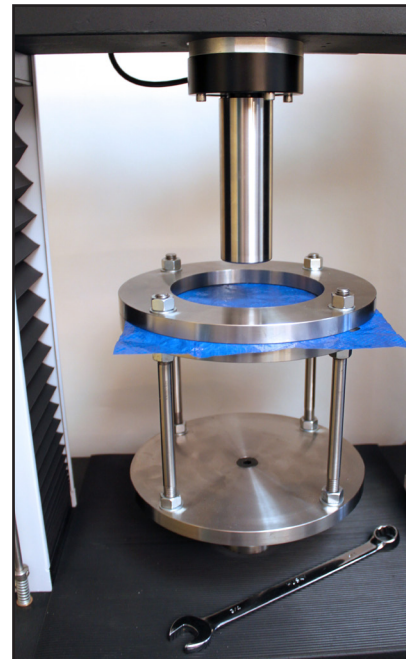
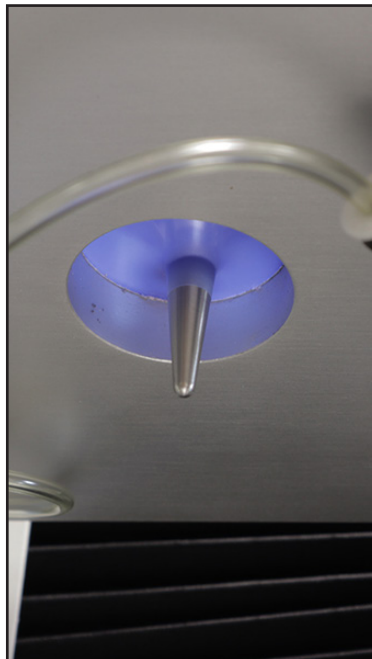
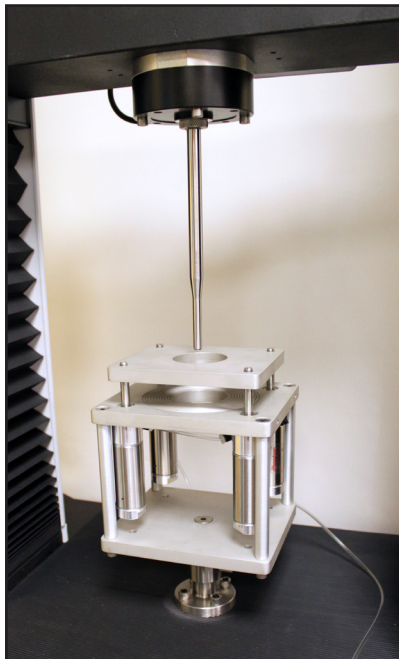
- Plastic film
- Packaging material
- Laminates
- Other flexible material

This puncture fixture is an air operated (pneumatic) device providing an easy method for securing the test specimen. The top plate has a circular opening where the probe penetrates the sample.

The diameter of the circular opening, diameter of the probe and height of the sample holder are all variable ensuring compliance with a wide range of standards including ASTM F1306, D4833, D751, D6241.



Puncture Fixture for ASTM F-1306
200 N (20 kg, 45 lbf)



Thwing-Albert
Instrument Company



TA022522

thwingalbert.com