

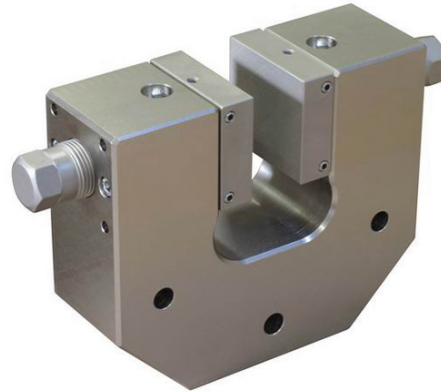
Vise Grip

TAS90

Dual acting design, also for asymmetrical samples.
 Jaws articulate and provide a self-aligning and self-tightening effect
 The grips are ordered in pairs but can also be ordered separately (0.5 pair).



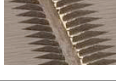



We recommend the usage of an air screwdriver.

Item number	TAS90
Tensile force	46 kN at 92 kN clamping force
Clamping force	92 kN at 500 Nm* (9.2 kN at 50 Nm)
Temperature range	0°C - +180°C Other temperature ranges on request
Body	Steel, nickel-coated
Weight	12 kg each grip (without jaws)
Scope of delivery	1 pair of grips



Jaws for TAS90: Scope of delivery: 1 set = 4 jaws
 Jaws with other dimensions and surface coatings on request

Item no.	Surface	Clamping surface H x W	Opening	Weight per pair
TAS90-B	Blank (smooth) jaws	60 x 66 mm	0 – 30 mm	1.2 kg
TAS90-BP	Pyramid (serrated) jaws	60 x 66 mm	0 – 30 mm	1.1 kg
TAS90-BV	V-jaws for round samples	Clamping height 60 mm	6 – 30 mm Ø	1.2 kg
TAS90-BW	Wave jaws	60 x 66 mm	0 – 30 mm	1.1 kg
TAS90-BD	Diamond jaws	60 x 66 mm	0 – 30 mm	1.2 kg
TAS90-BDV	Diamond-coated V-jaws	Clamping height 60 mm	6 – 30 mm Ø	1.2 kg
TAS90-BG	Rubber-coated jaws	60 x 66 mm	0 – 28 mm	1.2 kg
TAS90-BP120	Pyramid (serrated) jaws	70 x 120 mm	0 – 20 mm	5.4 kg
TAS90-B210	Blank (smooth) jaws	70 x 210 mm	0 – 20 mm	6.6 kg
TAS90-BP210	Pyramid (serrated) jaws	70 x 210 mm	0 – 20 mm	6.6 kg
TAS90-BV210	V-jaws for round samples	Clamping height 70 mm	8 – 20 mm Ø	6.6 kg
TAS90-BW210	Wave jaws	70 x 210 mm	0 – 20 mm	6.4 kg
TAS90-BWG210	Rubber-coated wave jaws	70 x 210 mm	0 - 16 mm	6.7 kg

	Blank jaws <ul style="list-style-type: none"> • Suitable for own further treatments • Steel-blanks without coating
	Pyramid jaws <ul style="list-style-type: none"> • Pyramids 1.2x45° • Hardened steel 58HRC • Nickel-plated
	V-jaws <ul style="list-style-type: none"> • For all kinds of round samples • Tooth pitch 1.2 mm • Hardened steel 58HRC • Nickel-plated
	Wave jaws <ul style="list-style-type: none"> • For flexible materials • Wave 5 mm • Hardened steel 58HRC • Nickel-plated
	Diamond jaws <ul style="list-style-type: none"> • Clamping surface coated with synthetic diamonds • Nickel-plated
	Rubber jaws <ul style="list-style-type: none"> • 1 mm rubber coating (NBR) • Nickel-plated

