

# Pneumatic Grip

TA149 – 2.4kN

## TA149 Pneumatic Grip 2.4 kN

Symmetric clamping. Dual-action for self centring of the specimen which allows its quick and easy loading.

Each grip is supplied with a specimen alignment device, which can be mounted directly on the jaws.

### Ordering information

TA149 are supplied in pairs, but can also be ordered as single grip (0.5 pair).

Jaw faces need to be ordered separately.



|                      |  |
|----------------------|--|
| Item number          | TA149  |
| Clamping force       | 2.4 kN at 7bar                                     |
| Temperature range    | 0°C - +70°C<br>Other temperature ranges on request |
| Body                 | Aluminium  |
| Pneumatic connection | Internal thread coupling 1/8"                      |
| Weight               | 1.21kg each grip (without jaws)                    |

|  |   |
|--|---|
|   | <b>Blank jaws</b> <ul style="list-style-type: none"> <li>Suitable for own further treatments</li> <li>Steel-blanks without coating</li> </ul>                                   |
|  | <b>Rubber jaws</b> <ul style="list-style-type: none"> <li>1 mm rubber coating (NBR)</li> <li>Nickel-plated</li> </ul>   |
|  | <b>Pyramid jaws</b> <ul style="list-style-type: none"> <li>Pyramids 1.2x45</li> <li>Hardened steel 58HRC</li> <li>Nickel-plated</li> </ul>                                      |
|  | <b>V-jaws</b> <ul style="list-style-type: none"> <li>For all kinds of round samples</li> <li>Tooth pitch 1.2 mm</li> <li>Hardened steel 58HRC</li> <li>Nickel-plated</li> </ul> |
|  | <b>Wave jaws</b> <ul style="list-style-type: none"> <li>For flexible materials</li> <li>Wave 5 mm</li> <li>Hardened steel 58HRC</li> <li>Nickel-plated</li> </ul>               |
|  | <b>Diamond jaws</b> <ul style="list-style-type: none"> <li>Clamping surface coated with synthetic diamonds</li> <li>Nickel-plated</li> </ul>                                    |

### Jaws for TA149: Scope of delivery 1 set = 4 jaws

| Item No. | Surface      | Clamping surface<br>H x W | Opening    | Weight<br>per pair |
|----------|--------------|---------------------------|------------|--------------------|
| TA149-B  | Blank jaws   | 30 x 50mm                 | 0 – 7mm*   | 0.22kg             |
| TA149-BG | Rubber jaws  | 30 x 50mm                 | 0 – 5mm*   | 0.22kg             |
| TA149-BP | Pyramid jaws | 30 x 50mm                 | 0 – 7mm*   | 0.22kg             |
| TA149-BV | V-jaws       | 30 x 40mm                 | 4 – 7mm Ø* | 0.18kg             |
| TA149-BW | Wave jaws    | 30 x 50mm                 | 0 – 7mm*   | 0.20kg             |
| TA149-BD | Diamond jaws | 30 x 50mm                 | 0 – 7mm*   | 0.22kg             |

\* Other opening widths (up to 12 mm) and jaw faces with differing dimensions and surface coatings are also available on request



**Thwing-Albert**  
Instrument Company

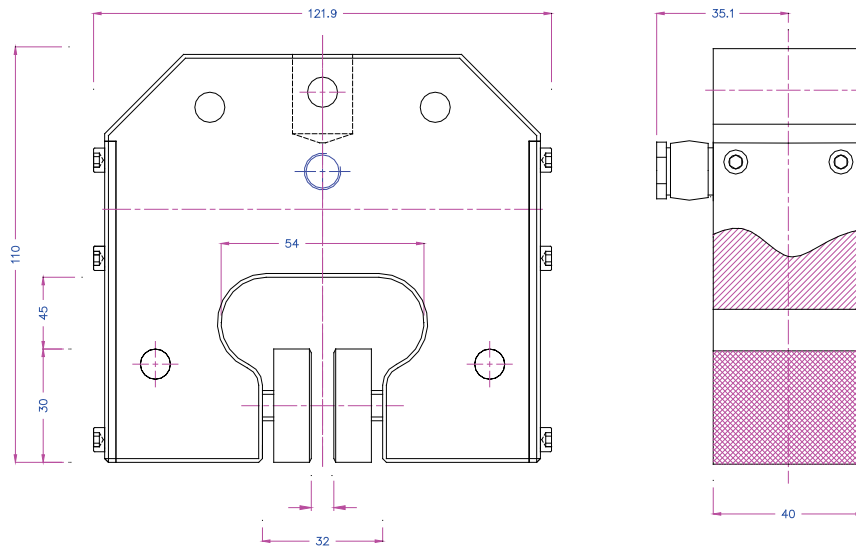


TA062322

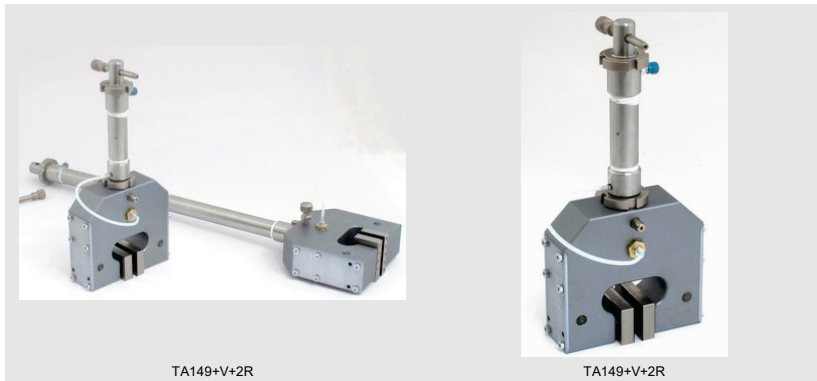
thwingalbert.com

# Pneumatic Grip

TA149 – 2.4kN



## Examples for special requirements solutions

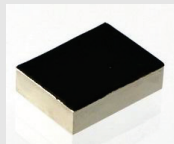


TA149+V+2R

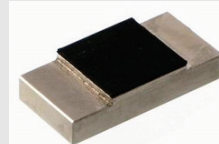
TA149+V+2R



TA149-BG20x50  
Height 20 mm x Width 50 mm



TA149-BG30x40  
Height 30 mm x Width 40mm



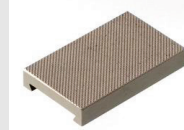
TA149-BG25x25  
Height x Width 25 mm



TA149-BP30x25-0.7x45  
Height 30mm x Width 200 mm – small pyramids 0.7x45



TA149-GT  
Inset jaws carrier



TA149-EBP  
Pyramid inset jaws



**Thwing-Albert**  
Instrument Company



TA062322

[thwingalbert.com](http://thwingalbert.com)